

MONARCH BUTTERFLY

MONARCH BUTTERFLY

PARTS OF A MONARCH

Directions: Use the labels below to name each part of the monarch butterfly. Then, color!



MONARCH BUTTERFLY

LESSON PLAN

Day One: Introduction

Objective: Students will be able to identify characteristics and label the parts of a Monarch Butterfly.

LESSON PLAN: DAY ONE

Introduction (10 minutes):

• Explain to students that through out the week, you will be learning about Monarch Butterflies. Ask students what they already know about Monarch Butterflies.

• Teacher will read "Waiting For Wings" by Lois Ehlert. Questions to ask during the book -> What do you notice about the caterpillars? What colors and patterns do you see? What was your favorite part of the butterfly's journey? Why are butterflies important for plants and flowers?



MONARCH BUTTERFLY

VOCABULARY

Directions: Cut out each definition and match it to the correct vocabulary word.

Migration	Climate
Instinct	Conservation

MONARCH BUTTERFLY



MONARCH BUTTERFLY

ALL ABOUT MONARCHS!

Are

Can

Eat

Live

MONARCH BUTTERFLY

LESSON PLAN

Week at a Glance:

Day One: Introduction

Day Two: Habitat/Diet

Day Three: Life Cycle

Day Four: Migration

Day Five: Review



Life Cycle of a Monarch BUTTERFLY

Name: _____

A COMPREHENSIVE GUIDE TO THE MONARCH BUTTERFLY!

Includes lesson plans, graphic organizers, craft ideas, projects, comprehension questions and more!

FROM YOUR FRIENDS AT



MONARCH BUTTERFLY

LESSON PLAN

Week at a Glance:



Day One: Introduction

Day Two: Habitat/Diet

Day Three: Life
Cycle

Day Four: Migration

Day Five: Review



MONARCH BUTTERFLY



LESSON PLAN



Day One: Introduction

Objective: Students will be able to identify characteristics and label the parts of a Monarch Butterfly.



LESSON PLAN: DAY ONE

Introduction (10 minutes):

*Explain to students that throughout the week, you will be learning about Monarch Butterflies. Ask students what they already know about Monarch Butterflies.

*Teacher will read "Waiting for Wings" by Lois Ehlert. Questions to ask during the book - What do you notice about the caterpillars? What colors and patterns do you see? What was your favorite part of the butterfly's journey? Why are butterflies important for plants and flowers?



MONARCH BUTTERFLY

Lesson (20 minutes):

*Teacher will help students as a whole group to complete the worksheet "All About Monarchs" using information from the read aloud.

*With a partner or small group, students will label the parts of a Monarch Butterfly using the activity sheet attached. Students will identify the head, thorax, abdomen, antennae and wings.

Independent Work (15 minutes)

*Independently, students will complete the "Make Your Own Monarch" craft. Make sure to color pieces of the butterfly, cut out the pieces of the Monarch Butterfly, then glue onto a construction sheet of paper. You may also have students label the parts of the butterfly on the construction paper.

Closing (5 minutes)

*Students will share their craft with their small group or with the class. Ask students what they are looking forward to learning about in the next few days.



MONARCH BUTTERFLY

ALL ABOUT MONARCHS!

Are

Can



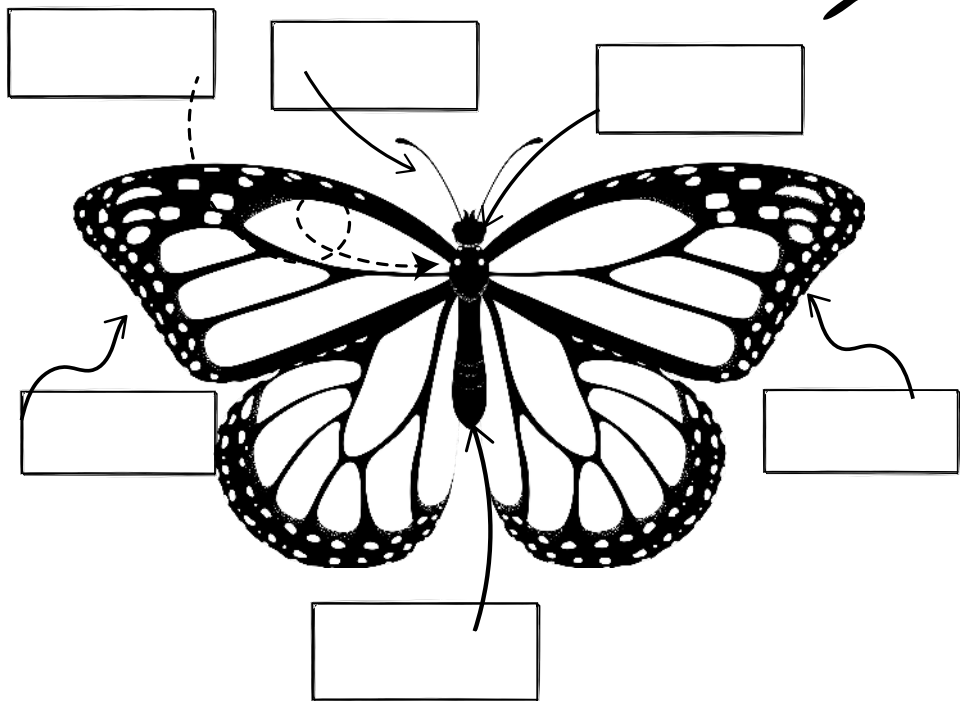
Eat

Live

MONARCH BUTTERFLY

PARTS OF A MONARCH!

Directions: Use the labels below to name each part of the Monarch Butterfly. Then, color!



*wing
*wing

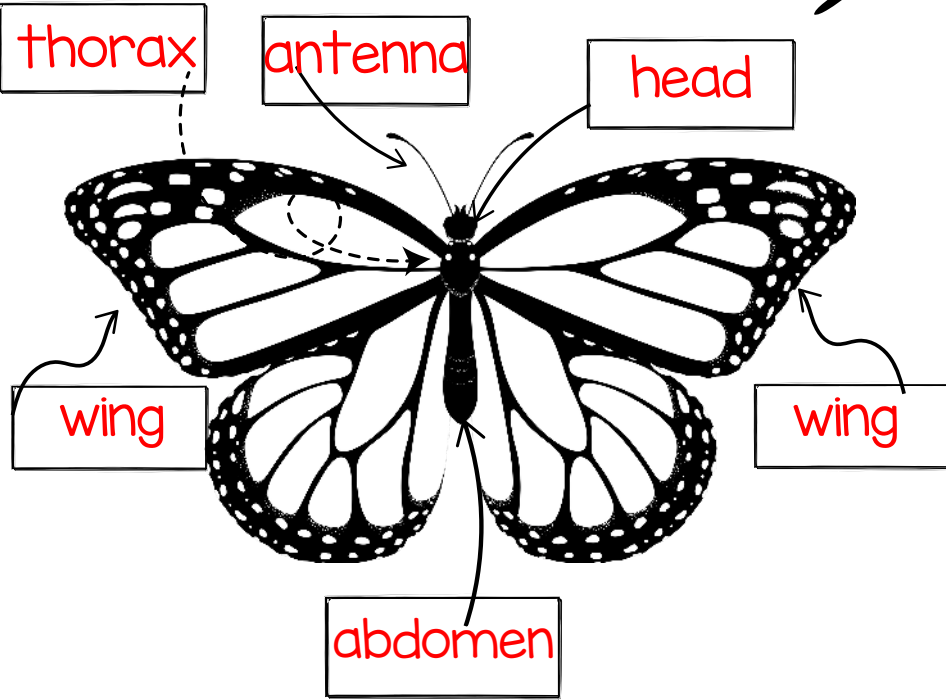
*antenna
*thorax

*head
*abdomen

MONARCH BUTTERFLY

PARTS OF A MONARCH!

Answer Key

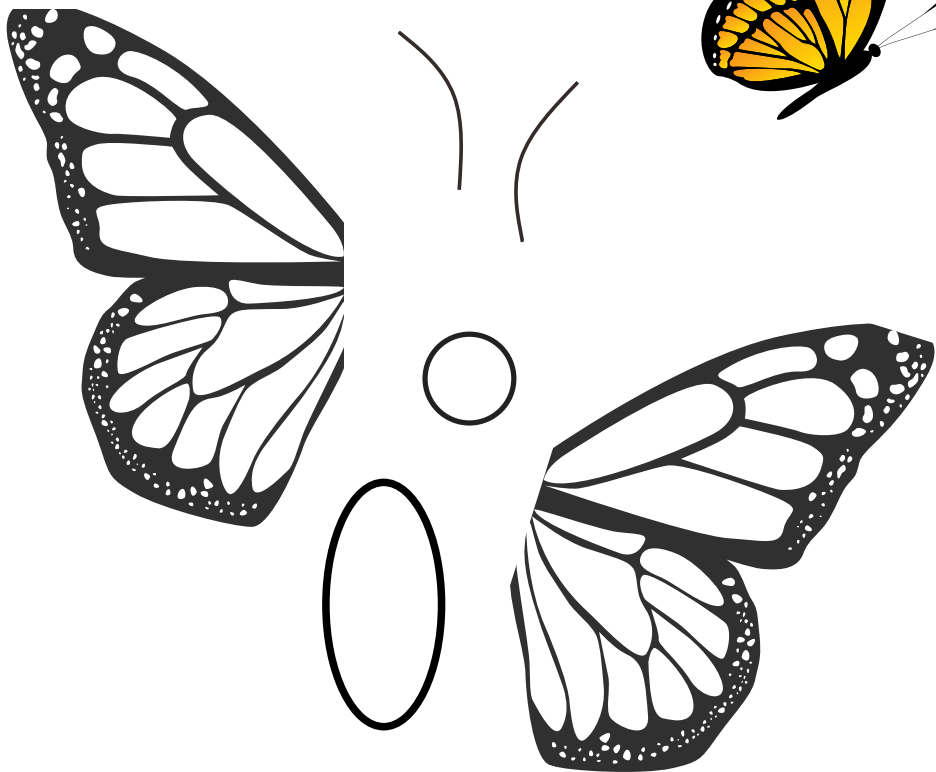


- *wing
- *wing
- *antenna
- *thorax
- *head
- *abdomen

MONARCH BUTTERFLY

MAKE YOUR OWN MONARCH

Directions: Cut out each piece and glue together to make your own Monarch Butterfly.



Tip: Glue on a piece of green construction paper!

MONARCH BUTTERFLY

LESSON PLAN



Day Two: Habitat/Diet

Objective: Students will be able to describe the habitat of the Monarch Butterfly. Students will also be able to identify what Monarch Butterflies eat.



LESSON PLAN: DAY TWO

Introduction (10 minutes):

*Inform the students that today you will continue to learn about Monarch Butterflies and will focus on their habitat and what they eat.

*Ask students to recall what a habitat is and explain that it is where an animal lives. Have students make a prediction on where they believe the best place for a Monarch Butterfly to live would be. What would they need in their environment to grow and thrive?

*Show video to students on Monarch Butterflies
- https://www.youtube.com/watch?v=Q4_90JhhfhM



MONARCH BUTTERFLY

Lesson (20 minutes):

*Teacher will read "Milkweed for Monarchs" by Christine Van Zandt. Questions to ask during/after reading - Make a prediction. What do you think milkweed is? Make a personal connection. Where have you seen a Monarch Butterfly? How does milkweed help the Monarch Butterfly grow? Are there ways that we can help protect the habitat of the Monarch Butterfly?

*Go on a "habitat hunt" outside. Have students search for plants or flowers that they think butterflies may be attracted to.

Independent Work (15 minutes)

*Have students use the activity worksheet below "My Monarch Butterfly Habitat". The students will draw a picture of where a Monarch Butterfly lives - including milkweed, a garden, flowers, plants, etc. They may also want to include trees, a stream or water source, and sunlight. The students will also write what they drew in two to three sentences.

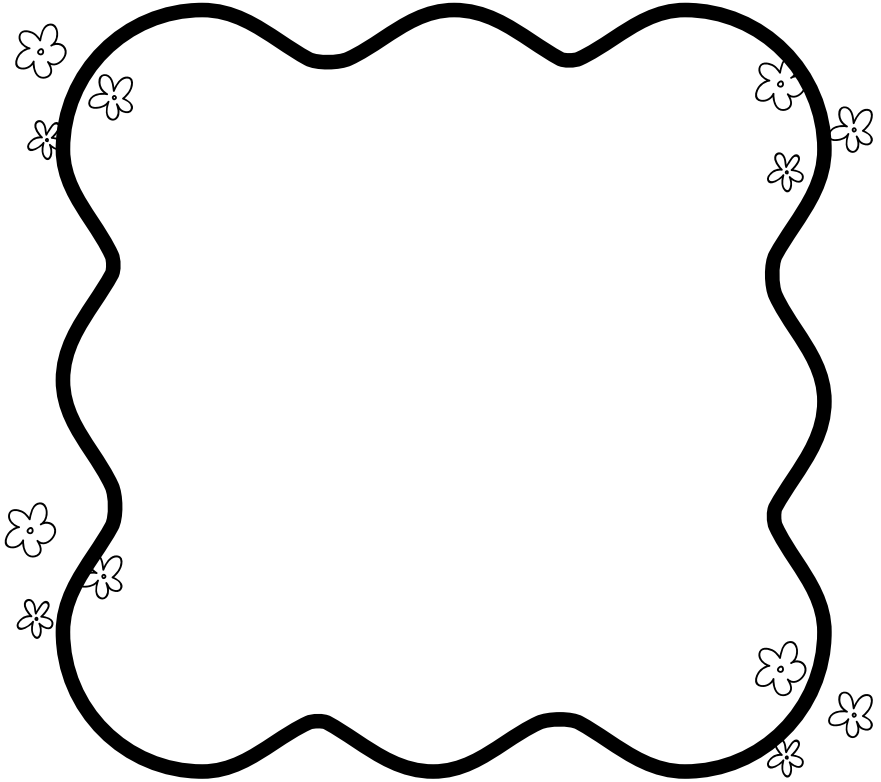
Closing (5 minutes)

*Give students a sticky note. Tell them to write three things you may find in a Monarch Butterfly's habitat. Students will turn in sticky note and teacher can share common answers with the class.



MONARCH BUTTERFLY

MY MONARCH BUTTERFLY HABITAT



MONARCH BUTTERFLY

LESSON PLAN



Day Three: Life Cycle

Objective: Describe the stages of the Monarch Butterfly's life cycle: including egg, pupa, larvae and adult. Explain what happens during each stage of the cycle.



LESSON PLAN: DAY THREE

Introduction (10 minutes):

*Inform students that today you will continue to learn about Monarch Butterflies. Today's lesson will be on the life cycle of the butterfly.

*Explain that life cycles are the stages that an animal goes through as it grows. Ask if anyone knows the stages a butterfly goes through as it grows.

*Show video from National Geographic to students - <https://www.youtube.com/watch?v=KVm5k99PnBk>



MONARCH BUTTERFLY

Lesson (15 minutes):

*Read "How Does A Caterpillar Change?" by Eric Carle.

*As a class, complete the activity worksheet on the different stages attached below. Use the words at the bottom of the page to label each stage. As you label, discuss what happens during each stage.

Independent Work (20 minutes)

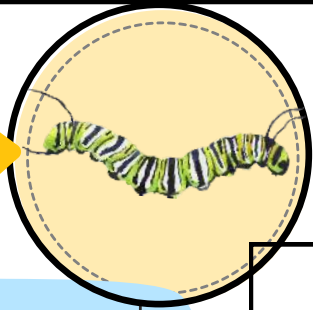
*Students will use the activity book attached below to explain each stage of the Monarch Butterfly's life cycle. The students will recall information from the book and the video during the lesson to write two to three sentences describing each stage. Color, then cut out the activity book and staple together.



Closing (5 minutes)

*The students will share Monarch Butterfly life cycle books with a partner or small group.

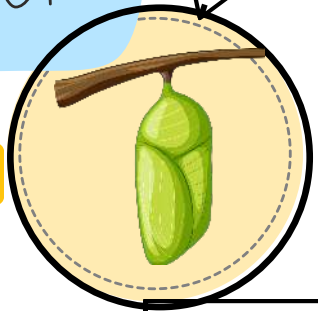
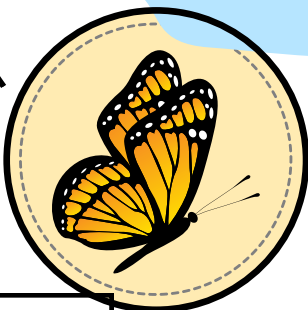
MONARCH BUTTERFLY



[]

life cycle
OF A
monarch

[]



[]

[]



pupa

larvae

egg

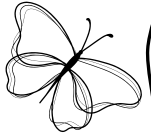
adult



Life Cycle



of a



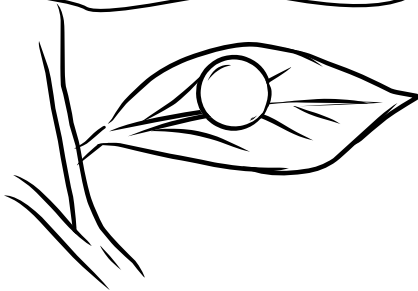
Monarch



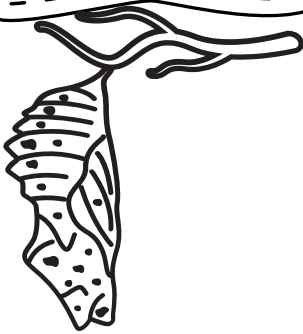
BUTTERFLY

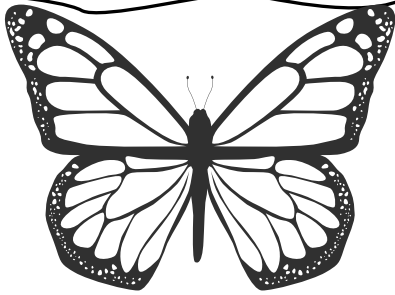


Name: _____









Four horizontal lines for writing, positioned below the butterfly illustration. The lines are solid and evenly spaced, providing a guide for text entry.

MONARCH BUTTERFLY

LESSON PLAN



Day Four: Migration

Objective: Students will be able to recognize the meaning of the word migration and identify why Monarch Butterflies need to migrate.



LESSON PLAN: DAY FOUR

Introduction (10 minutes):

*Ask students if they know what the word migrate means. Explain that migrate means moving from one region or area to another, typically because of weather. Tell students that today's lesson will be on why Monarch Butterflies migrate and where they go on their journey.

*Read "Home is Calling: The Journey of the Monarch Butterfly" by Katherine Pryor.

Questions to ask during the read aloud - Why do you think the Monarch butterflies travel such a long distance? How do you think they know where to go?



MONARCH BUTTERFLY

Lesson (20 minutes):

- *Teacher will explain key vocabulary words to students. Utilize vocabulary activity sheet below to match the definitions to the following words - migration, climate, instinct, and conservation.
- *Watch "Unraveling the Great Butterfly Migration Mystery". <https://www.youtube.com/watch?app=desktop&v=fBakLuH6kDY&t=0s>
- *After the video, explain to students that the main idea of something is what it is mostly about. Can anyone identify the main idea of the video? (The main idea is that Monarch Butterflies migrate from the United States/Canada to Mexico and back each year.)
- *Ask students what other details they noticed from the video. Use the activity sheet to fill in three other details.

Independent Work/Closing (10 minutes)



- *Students will complete "Fact or Fiction" activity sheet attached below. Review as a class and explain how you would change the statements that are "fiction" to make them "fact".

MONARCH BUTTERFLY

Name: _____

VOCABULARY

Directions: Cut out each definition and match it to the correct vocabulary word.

Migration

Climate

Instinct

Conservation

Moving from one place to another, usually during a specific time

A natural way animals behave that they are born with

Taking care of nature, making sure it is clean and safe for animals

The weather in a particular region, like warm or cold



MONARCH BUTTERFLY

MAIN IDEA & KEY DETAILS

MAIN IDEA →

Monarch Butterflies migrate from the United States and Canada to Mexico each year.

Detail #1 →

Detail #2 →

Detail #3 →



MONARCH BUTTERFLY



FACT OR FICTION?



Directions: Write true or false next to the statement below.



Migration means to go to sleep for the winter.



During migration, Monarch butterflies may travel up to 250 miles a day.



Monarchs migrate to find warmer weather because they cannot survive colder temperatures.



Monarch Butterflies usually get lost during migration and do not know where to go.



Monarch Butterflies form groups called "roosts" at night.



Monarch Butterflies can live up to eight or nine months during migration.



MONARCH BUTTERFLY



FACT OR FICTION?



Answer Key



Migration means to go to sleep for the winter.

FALSE



During migration, Monarch butterflies may travel up to 250 miles a day.

TRUE



Monarchs migrate to find warmer weather because they cannot survive colder temperatures.

TRUE



Monarch Butterflies usually get lost during migration and do not know where to go.

FALSE



Monarch Butterflies form groups called "roosts" at night.

TRUE



Monarch Butterflies can live up to eight or nine months during migration.

TRUE

MONARCH BUTTERFLY



LESSON PLAN



Day Five: Review

Objective: Students will be able to describe the Monarch Butterfly including identifying its habitat, diet, lifecycle and behaviors.



LESSON PLAN: DAY FIVE

Introduction (10 minutes):

*Explain to students that today you will be reviewing what you have learned throughout this week on Monarch Butterflies.

*Ask students to share with a partner what they remember out where Monarch Butterflies live, what they eat, their life cycle and why/where they migrate.

*Butterfly Snack Craft Activity: Make a simple butterfly snack for students. Put "nectar" (juice) in small cups, gummy worm caterpillars, pretzels (butterfly wings), etc.



MONARCH BUTTERFLY

Lesson (20 minutes):

- *Read article together with students to review Monarch Butterflies.

Article - <https://a-z-animals.com/animals/monarch-butterfly/>

- *Review with students the habitat, diet, life cycle, migration, physical characteristics and fun facts of the Monarch Butterfly using the activity sheet attached.

- *Students will work with a partner to participate in the "Memory Matching Game" attached below. Cut out each card and lay out in rows face down. Flip over two cards at a time to find the card's match.

Independent Work/Closing (10 minutes)

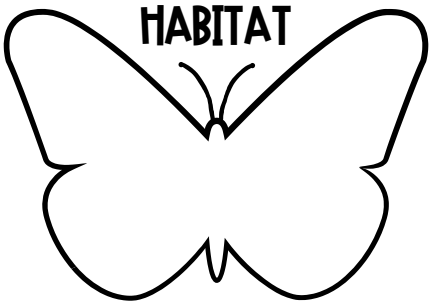
- *Students will work independently to complete review comprehension questions on the activity sheet attached.



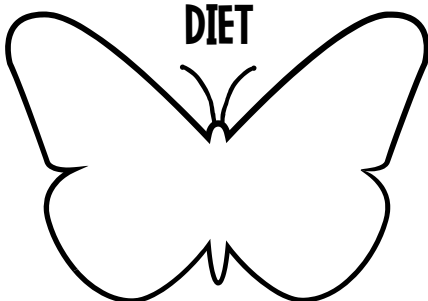
MONARCH BUTTERFLY

✿ MONARCH REVIEW! ✿

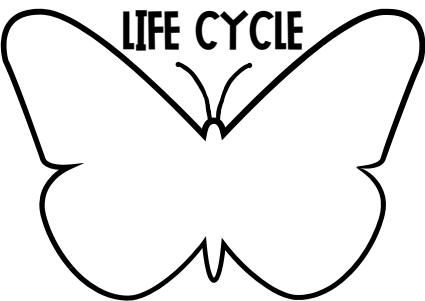
HABITAT



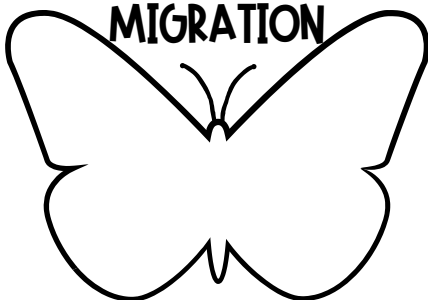
DIET



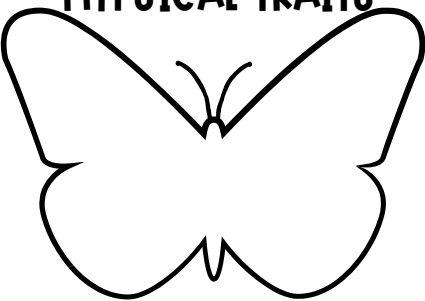
LIFE CYCLE



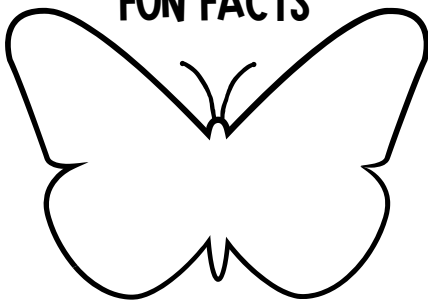
MIGRATION



PHYSICAL TRAITS



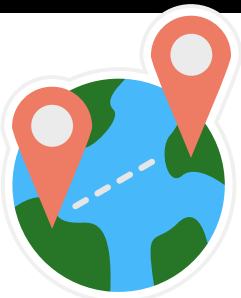
FUN FACTS



MONARCH BUTTERFLY

monarch matching game

Directions: Cut out each card. Mix up and lay face down in rows. Choose two cards at a time to flip over to see if the word matches a definition. Keep flipping until all of the matches are found.



MIGRATION

Moving from one place to another, usually to find food or because of weather



LIFE CYCLE

The stages an animal goes through as it grows. Ex - egg, larvae, pupa, butterfly



HABITAT

Where an
animal lives



MILKWEED

A special plant
that Monarch
Butterflies eat
and lay their eggs
on



CLIMATE

Weather in a
certain place, like
hot, rainy, snowy,
etc.

MONARCH BUTTERFLY



MONARCH REVIEW!



1. What do Monarch Butterflies typically eat?

2. Describe the habitat of the Monarch Butterfly.

3. What does the word "migrate" mean? Why do Monarch Butterflies migrate?

4. What are the stages in the life cycle of a Monarch Butterfly?

